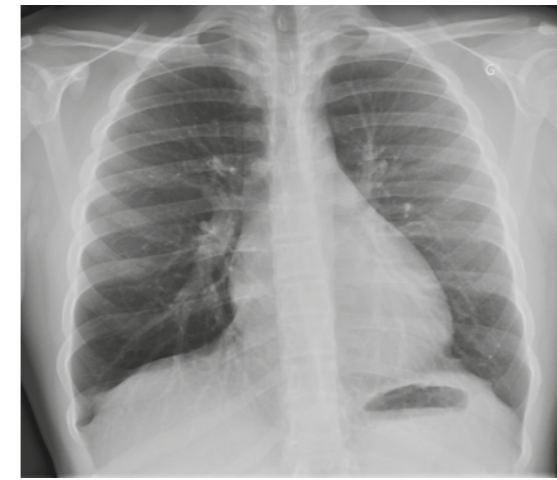


RAD SERIES E+

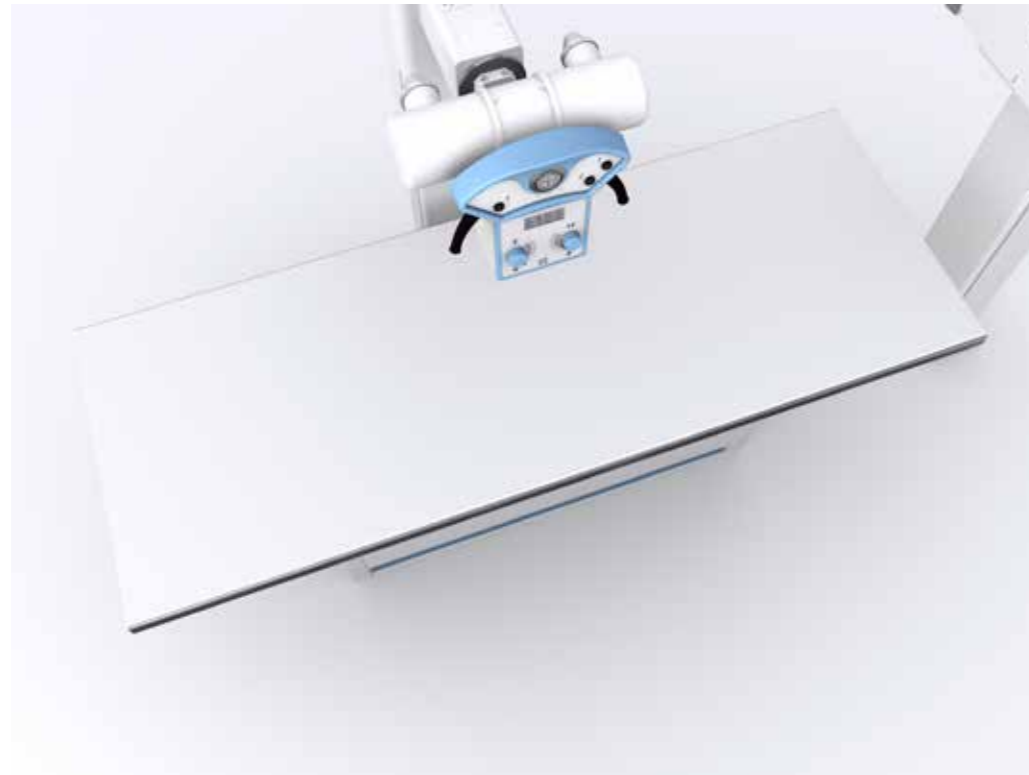


STEPHANIX
MEDICAL IMAGING SOLUTIONS



Rad Series E+ DReam is a versatile RAD room to perform X-rays from head to toes. The exposures can be made directly on the table, but also on a stretcher or wheelchair.





The version with variable height adjusts the access of the tabletop to the stretcher for a better patient transfer.



The Wall Bucky moves 150 cm vertically to explore the entire skeleton.

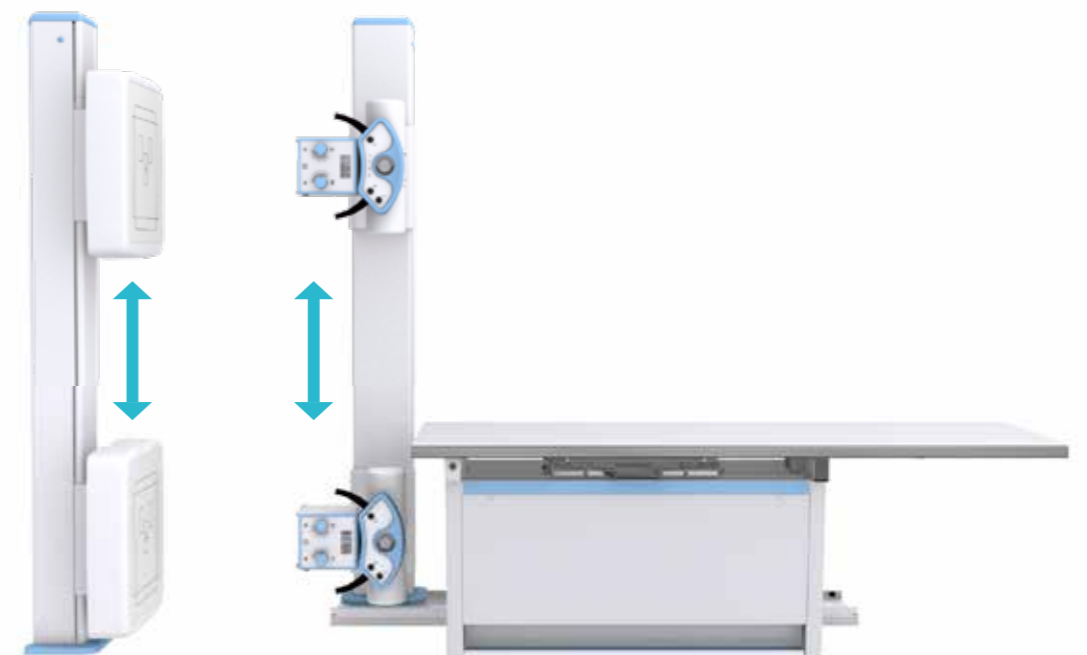
In auto-tracking configuration, the tube movements are synchronised with the vertical displacement of the Wall Bucky, and with the table whenever applicable.

A tilting Bucky is available in option for extremities exams.

COMFORT OF USE

The four-ways floating tabletop is made of low absorption materials < 1.0 mm Al eq.

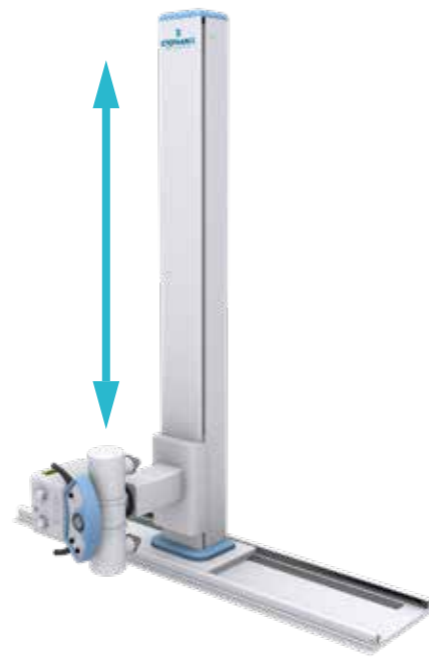
Its width is suitable for patient positioning up to 200 kg.



POSITIONING

Both vertical & horizontal exposures are possible thanks to the movements of the column tubestand. Travel on rail also offers a wide X-ray coverage.

The +/- 180° column rotation allows direct projections on stretcher: the patient transfer to the table is no longer necessary.



The x-ray assembly rotations, controlled by electromagnetic brakes, enable the positioning to realise many types of exams.



FOCAL DISTANCE

Adjustable SID with displacement on rail to perform chest exams.



VERTICAL MOVEMENT

Vertical travel of the Wall Bucky and tube for exams like lateral weight bearing foot and sinus in standing position.



ROTATION

Rotation of the column tubestand on several axes for lateral projections.



ANGULATION

Rotation of the column tubestand on several axes for lateral projections.



TELESCOPIC ARM

Optional telescopic arm for a useful transversal movement during examinations on polytrauma or on stretcher.

LATEST GENERATION OF DIGITAL RADIOGRAPHY SOLUTIONS: INTEGRATED, DYNAMIC, PORTABLE, WIRED AND WIRELESS DETECTORS.

REMOTE CONTROLLED TABLES



X-RAY ROOMS



X-RAY MOBILE UNITS



SURGICAL C-ARMS



Rad Series E+ - 2022/05. STEPHANIX se réserve le droit de modifier les caractéristiques de ses produits en fonction de l'évolution perpétuelle des technologies. Photographies non contractuelles. Stephanix allows the right of modifying the products' features regarding the evolution of the technologies without notice. Non-binding document.



STEPHANIX
MEDICAL IMAGING SOLUTIONS

Head office: 10, rue Jean Moulin
Z.I. du Bayon - 42150 La Ricamarie - FRANCE
Tel. +33 4 77 47 81 60 - Fax: +33 4 77 37 55 19
export@stephanix.com

www.stephanix.com