

# OMNISCOP DREAM-S



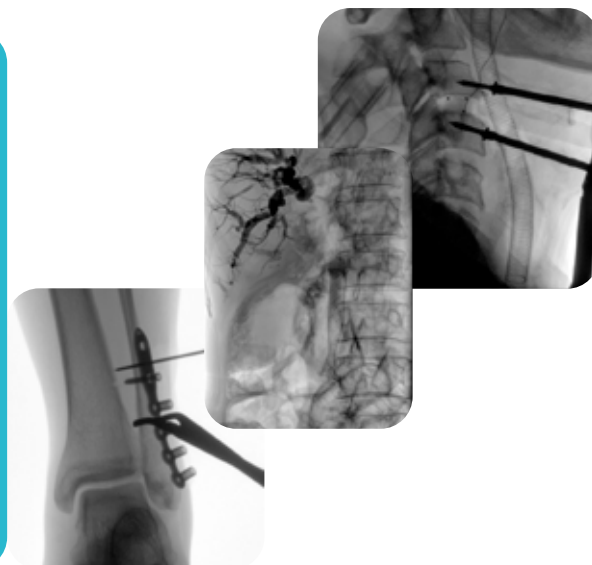
**STEPHANIX**  
MEDICAL IMAGING SOLUTIONS



**Omniscop DReam-S** : All-In-One unique surgical c-arm that fits in tight spaces or small operating rooms.

It's flat panel detector offers optimal image quality at low dose and user has the choice of 2 FPD size.

Suitable for all surgical procedures such as orthopedic, spine, urology, digestive as well as endoscopy, general radiology and much more.



## EASY TO USE AND OPERATE

The ergonomics of the C-arm offers an adapted, effortless and precise positioning around the patient. The compact 2-in-1 solution makes it easy to move in and between operating rooms. Each color-coded release lever is dedicated to one movement.

### ▶ 360° DISPLAY

View images with a maximum comfort. Monitor height and tilt are adjustable enhancing user experience. Image is always in surgeon's line of sight.



### ▶ ORBITAL ROTATION

Wide orbital rotation range (from +65 ° to -95°) speeds up angular and lateral projections without having to move the c-arm around the operating table.



### ▶ ANGULAR ROTATION

Precise movements and wide angles of more than +/- 210° around and in front of the patient.



### ▶ VARIABLE AND MOTORIZED HEIGHT

Vertical movement range of 450 mm turns this C-arm into a very versatile unit.





# OMNISCOP DREAM-S

**MEDICAL GRADE HD 27", TOUCH SCREEN - 4MP RESOLUTION,** allows live display and post-processing of images. The LIH (Last Image Hold) function allows you to freeze and store the last image of a series without user action.

**REMOVABLE GRID** for low dose pediatric surgery and gridless procedures.

**FLAT PANEL DETECTOR 21x21 OR 30x30 CM** higher definition with full resolution display 1:1.

**C-ARM** mobile and light, with an opening of the 108 cm (42,5 in) for a better and faster accessibility and positioning.

**POWERFUL 5KW GENERATOR** X-ray emission in pulsed mode with modulated power to suit every procedure type. Excellent dose/image quality ratio.

**UNPARALLEL ADJUSTMENT AND FLEXIBLY** Thanks to its 3-axis adjustment, monitor is always right at surgeon's line of sight.

**OPERATOR 12" TOUCH SCREEN** The operator's touch screen provides an easy access to exams protocols and image tools. Benefits from an unobstructed view of the live images, while having the controls always within reach.

**ADJUSTABLE HEIGHT** motorized vertical travel up to 45 cm.

**STEERING HANDLES** dual handle for easier movement and travel

**EXTENDED CONNECTIVITY :** USB, ETHERNET, WIFI, HDMI WIFI, RADIATION DOSE SR. (DICOM OPTIONS)



**AMORPHOUS SILICIUM FLAT PANEL DETECTOR**

Choose between 21x21 cm or 30x30 cm FOV to fit your surgical needs.



**DOSE REDUCTION**

50% dose reduction exam accessible with single click. Removable grid and digital zoom.



**LASER LOCALIZERS**

Located at tube and detector side, for a faster and more precise alignment.



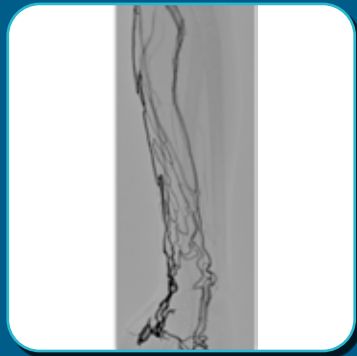
**WIRELESS FOOTSWITCH (OPTION)**

To be used instead of the standard wired footswitch.



**ADVANCED POSTPROCESSING**

Dedicated to each anatomical protocol to guarantee image quality reproducibility.



**DSA AND DEDICATED MEASUREMENT TOOLS (OPTIONS)**

To meet the needs of vascular exams.



**PRINTER (OPTION)**

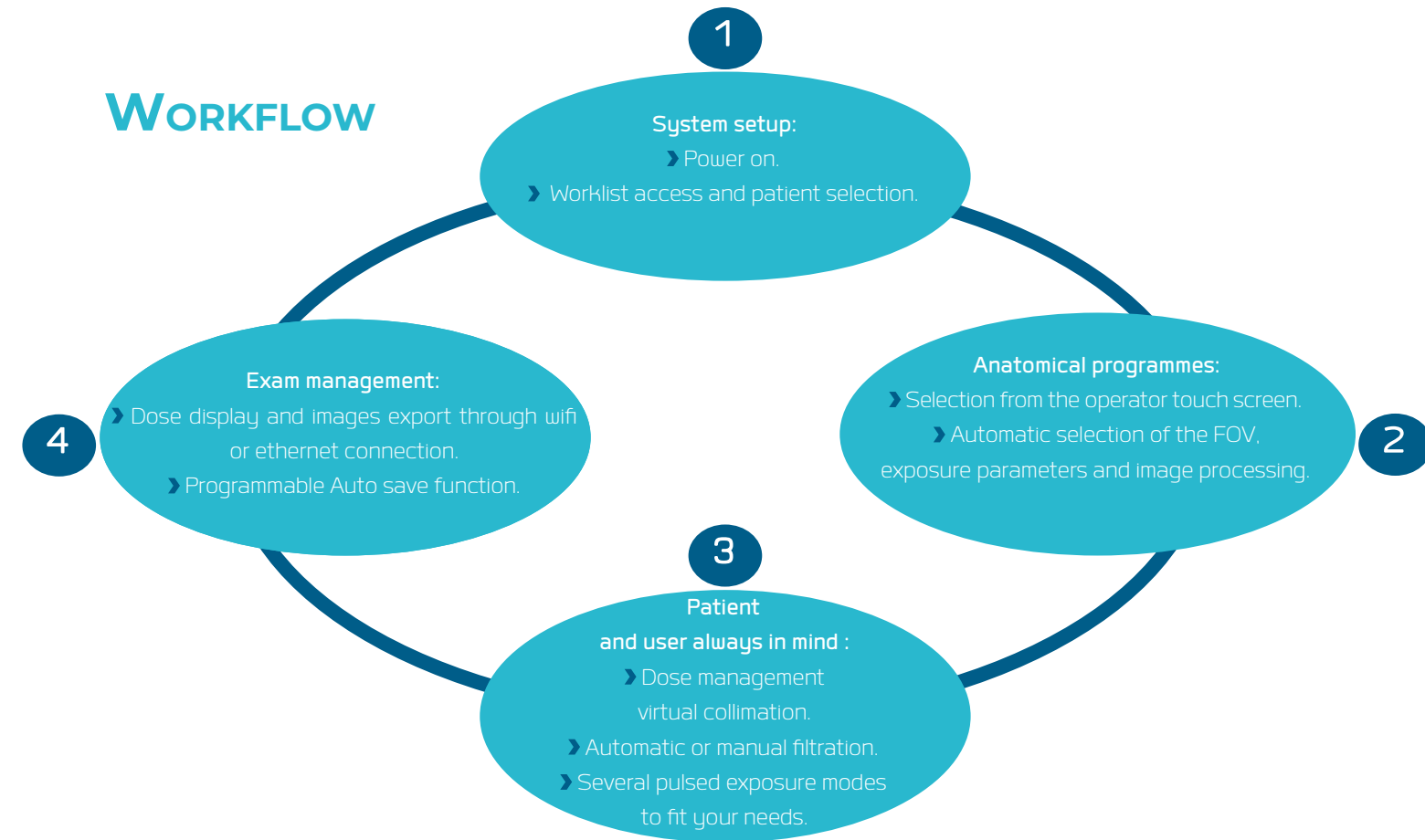
To have a hard copy in patient file of the dose report and key images. Images export can be performed via USB.



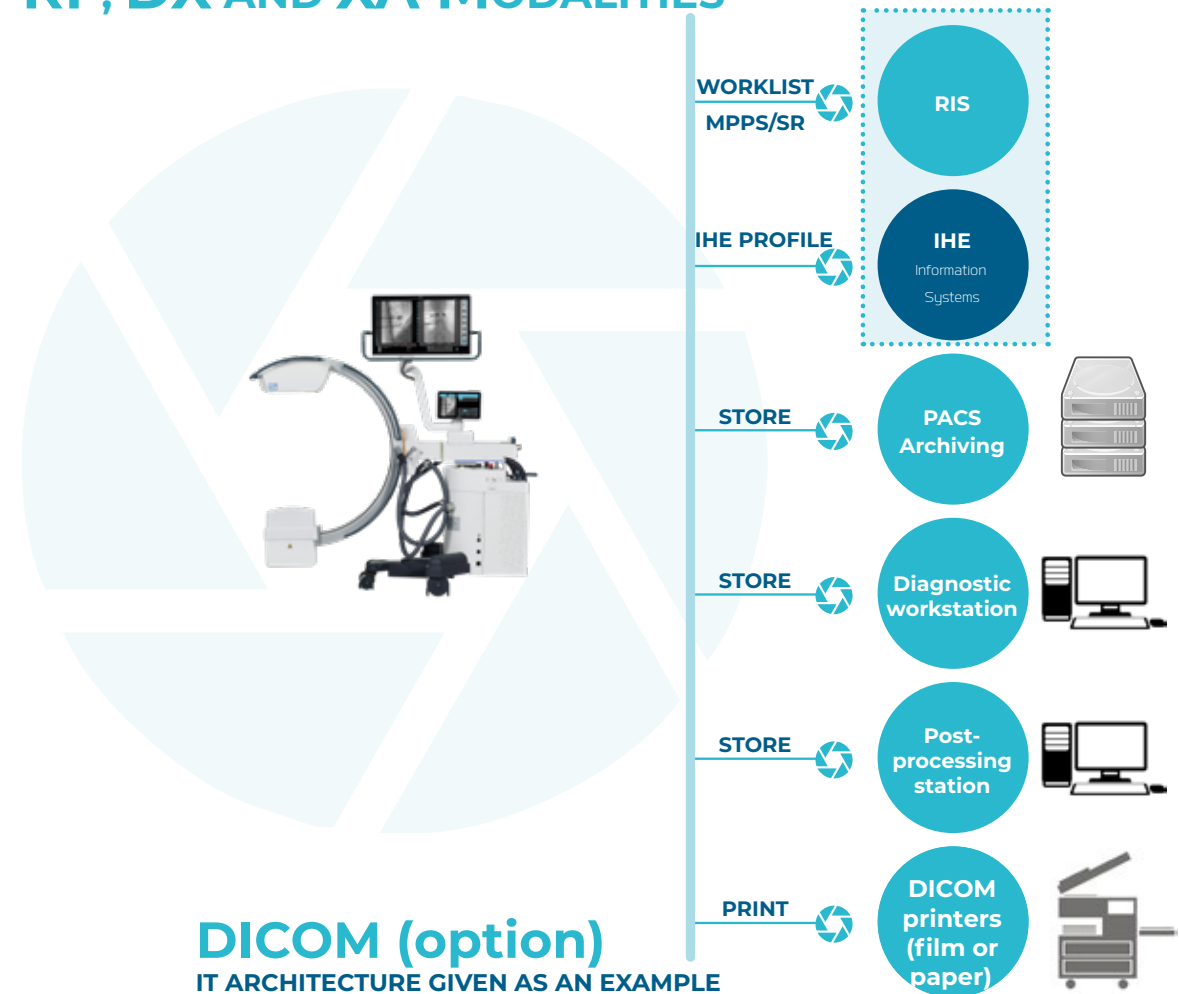
**STAND ALONE ADDITIONAL MONITOR (OPTION)**

Display in real time images shown on main screen.

**WORKFLOW**



**RF, DX AND XA MODALITIES**



# LATEST GENERATION OF DIGITAL RADIOGRAPHY SOLUTIONS: INTEGRATED, DYNAMIC, PORTABLE, WIRED AND WIRELESS DETECTORS.

## REMOTE CONTROLLED TABLES



## X-RAY ROOMS



## X-RAY MOBILE UNITS



## SURGICAL C-ARMS



Aux Arts Graphiques La Vie En Com - STEPHANIX se réserve le droit de modifier les caractéristiques de ses produits en fonction de l'évolution perpétuelle des technologies. Photographies non contractuelles. Crédits illustrations : l'atelier. Co: 80 10 22 63  
Stephanix allows the right of modifying the products' features regarding the evolution of the technologies without notice. Non-binding document. Omniscope D'exam-S - 2023/07.



**STEPHANIX**  
MEDICAL IMAGING SOLUTIONS

Head office : 10, rue Jean Moulin  
Z.I. du Bayon - 42150 La Ricamarie - FRANCE  
Tel. +33 4 77 47 81 60 - Fax: +33 4 77 37 55 19  
export@stephanix.com

[www.stephanix.com](http://www.stephanix.com)