

**STEPHANIX**

MEDICAL IMAGING SOLUTIONS

— CATALOG —

# STEPHANIX

STEPHANIX is a French company specializing in medical imaging since 1985.

A manufacturer of remote-controlled tables for R&F imaging applications, we design, develop and manufacture our products at our facility in France.

D<sup>2</sup>RS, our remote-controlled table is certified «[Origine France Garantie](#)». Much more demanding than the simple criterion «Made In France», this certification guarantees that the D<sup>2</sup>RS essential characteristics are designed and manufactured in France. Also we satisfy the requirement that at least 50% of the total manufacturing materials and labour cost be of domestic France origin.

Thanks to our know-how, we have conquered the French radiology market and continue our development and presence worldwide. Our systems are CE marked and registered with the FDA, Health Canada, TGA, SFDA. Thanks to these certifications, our products are available worldwide, 30% of our sales are international.

STEPHANIX is a member of the [French Healthcare Association](#). Promoting the French expertise in healthcare, in its broadest sense, is how “French Healthcare” conveys the worldwide excellence and impact of the French health products and services.

In the early 2000s, we forged important and solid partnerships with major manufacturers such as [Canon Medical Systems](#) and [Thales](#), with static and dynamic digital flat panel solutions that can equip our complete product range.

Innovation is our engine: STEPHANIX was the first company to introduce to the market a remote-controlled table with a flat panel detector.

[Our company](#): women and men who work for today. STEPHANIX designs in France the medical imaging solutions of tomorrow.



## SALES

Our sales force: we're here to support you.  
Medical Imaging professionals with a global vision, at your service, to offer you solutions and support in your projects.



## SERVICE

International support with staff trained on the latest technologies.  
Expert technicians which goal is to minimize downtimes of your system.



## TRAINING

Our clinical application department helps you from getting started to the expertise of your system and offers you additional training according to your needs. Throughout the year our technical staff organizes training sessions for our distributors' engineers. They're autonomous and efficient for installations and service of our equipment's all over the world.

## — RADIOLOGICAL SOLUTIONS —



From the remote-controlled table to rad-room or mobile x-ray, STEPHANIX demonstrates its know-how and innovates through the application of new technology and ideas: the integration of flat panel detectors\* is a real example and a proven success.

Mastery of research and development, manufacturing procedures and its commitment to quality service allow all practitioners to benefit from technology and performance tailored to their requirements.

STEPHANIX offers a wide range of digital detectors (DR) to meet all of your general radiology needs. In addition to the integrated full-field detectors, wireless detectors bring DR solutions wherever they are needed, such as trauma and bedside applications.

The large portfolio of flat panel detectors enables a wide-ranging solutions to meet wide-ranging department expectations: configurations with a single integrated or removable detector, configurations with two, three or four detectors with the possibility of combining all models.

\* installation of the first STEPHANIX remote-controlled room with a flat panel sensor integrated in September 2001.



D<sup>2</sup>RS

The whole STEPHANIX expertise.  
 Each anatomical protocol controls the automation of table positioning, collimation, filters, acquisition parameters and post-processing.  
 The lateral and longitudinal movements combined with the angulation of the column (+/- 40 °) allow complete coverage of the tabletop under X-rays, as well as smart rear access.  
 For positioning difficult patients, D<sup>2</sup>RS has no limitation of movement up to 230 kg and can support up to 310 kg in a horizontal position.  
 STEPHANIX has reimagined its control console. A new design, new materials, new technologies to offer ever more current products.



D<sup>2</sup>RS 90/90

The benefit of experience.  
 D<sup>2</sup>RS 90/90 keeps the famous qualities of D<sup>2</sup>RS such as the capacitive control console, complete and customizable autopositioning, the maximum unrestricted load of 230 kg, the column incidence combined with the tabletop movements which provide 2.25m coverage under X-ray and the rear patient access.  
 With these features, D<sup>2</sup>RS 90/90 optimizes its accessibility with a tilting of +/- 90° as well as an outstanding variable height travel, from 38 to 148 cm for unequalled access.



Xtreme Premium



Fully digital, fully automatic.  
 With autopositioning, the new Xtreme Premium multipurpose x-ray room is equipped with a ceiling suspension, an elevating floating tabletop and a tilting wall Bucky. It is digital with Flat Panel Detector technology.  
 Each customizable anatomical protocol drives the automation of units positionings, collimation, filters, acquisition & post-processing parameters.  
 Smoothness, ease of movement and technicality sum up this new x-ray system that focuses on your patients needs.



Xtreme

Xtreme, tailor-made customization.  
 The configurations are customizable according to your expectations: general radiology, traumatology, emergency room, paediatrics, specific applications.  
 Xtreme, analog or digital, is composed of a ceiling suspension, a vertical or tilting Bucky, and a fixed or mobile elevating table. It exists in manual, auto-tracking, and auto-positioning versions.  
 The combination of fixed & portable image detectors in the same room increases the possibilities of procedures to make routine clinical exams.





### Statif Pro

This equipment consists in a vertical column, on which slides vertically a rotating C-arm fitted with one Bucky and one X-ray tube.

Exams may be performed on patient in standing position, sitting in a wheelchair or lying on a mobile table or stretcher. This C-arm design allows profile exposures.

The Autopositioning version makes it a remote controlled and automated RAD room. With the touch screen, the operator can view an explanatory diagram of the patient's position for the selected exam as well as the pre-set parameters for the device and the generator.



### Statif

This unit allows x-rays to be taken in horizontal, vertical or oblique position; it is often dedicated to chest and extremity protocols.

A version with fixed SID, BRS type (specifications defined by WHO) is available in the STEPHANIX range of products.

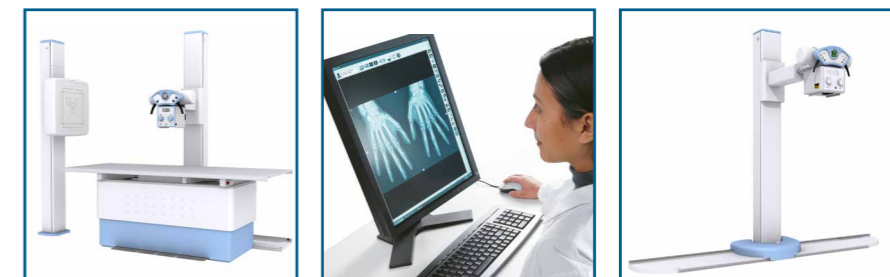


### Rad Series



With a floor tubestand column, RAD Series offers you the same applications as the RAD room with ceiling suspension:

- combinations of stands,
- possibilities of osteoarticular and chest imaging,
- conventional or DR versions



### Nomad DReam

Nomad digital solution:

To digitalize your analog x-ray rooms and mobile units, without modification nor generator connection, the portable acquisition console is linked to a wifi Flat Panel Detector (FPD) with the Automatic Exposure Detection mode.

The touch screen user interface allows working by anatomical regions with dedicated post-processings that can be adjusted before sending to network.





### Movix 4/8

Weighing less than 100 kg, compact (72x67x141 cm folded), this mobile unit with a monoblock generator is used in hospitals for patient bedside exposures, or in the field for ambulatory exams, for example during humanitarian or sporting events.

The Flat Panel Detectors of the DR mobile versions can be shared in all STEPHANIX digital rooms.



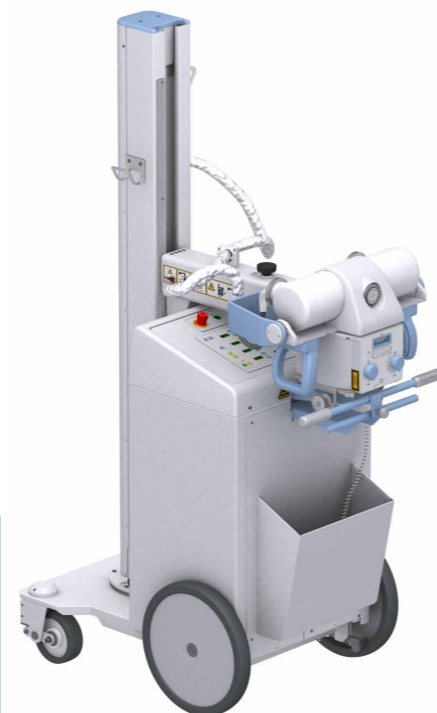
### Movix Series E+

Movix Series E + mobile units are capacitor assisted. They are available in three different powers: 16, 20 and 32 kW.

Their different high kV voltages and their small sizes enable x ray exams in patient rooms and particularly adapted to the needs in emergency or intensive care units, paediatrics and operating rooms.

The design of the telescopic arm on a rotating column provides a better positioning, for exposures (end of bed for example), compared to a standard folding arm system.

This mobile unit only exists in analog version.



### Movix Series



Fitted with high Frequency generators, they are suitable in all demanding environments such as emergency rooms and adult & neonatal ICUs.

Movix Series can work in stand-alone during exposures; it does not require to be connected to the mains (only for recharging the batteries).

With the sensitive-driven pressure handle, the user is able to control the speed. The secondary motorization controls located on the tubehead allow fine positioning adjustment of the unit. The movements of the telescopic arm, the rotations of the column, of the tube and of the collimator ensure the positioning in order to achieve many types of exposures. The optional retractable column (on digital DR versions) increases user visibility when displacing it.



### Movix DReamy

Have access the next generation of STEPHANIX mobile units: innovation concentrated in a more compact motorized mobile unit, keeping the best of its predecessors, and offering greater flexibility and ergonomics.

Its technology has been designed for and with healthcare professionals to provide reliability, power, high definition image, user-friendly interface and workflow, patient coverage, greater visibility when traveling.

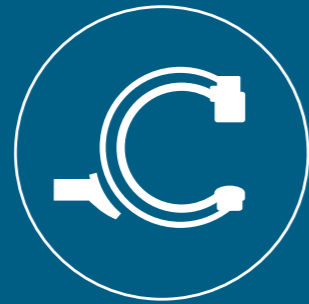
These systems are designed for patient bedside radiography, but also for imaging in intensive care, emergency, and paediatric radiology units.



**NEW**



— C-ARMS —



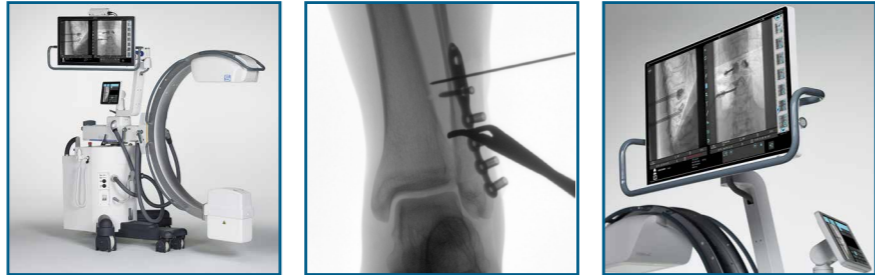
Because imaging in the operating room is challenging, it requires compact products, quick and easy to use. STEPHANIX offers a range of C-Arms. As a radiological imaging specialist, we offer several flat panel detectors configuration.



**Omniscop DReam-S**



This All-in-One C-arm has a very small footprint. Omniscop DReam-S: a C-arm, a tube, a generator, an intelligent operator console and a touchscreen workstation. This optimized system on a single unit will be adapted for your extremity surgeries but also for more challenging procedures thanks to its generator power. The C-arm depth of 108 cm offers an easy accessibility. The ergonomics of its touch screen interface fits the needs of users in the operating room. A dedicated storage area is provided to install a printer on the workstation (option).



**Omniscop DReam**

This C-arm with flat detector comes with a dedicated workstation on trolley. The C-Arm is built with the latest generation flat panel with several size (FOV). Omniscop DReam will assist you in a variety of surgical procedures thanks to different generator powers, at reduced dosimetry\*, and thanks to a larger C-shaped arm opening\*. Optional tools are available. Its removable grid (manual) will meet your pediatrics' needs. A space is dedicated for the installation of a printer on the workstation (option).



\* compared to the previous Omniscop Series family





---

[www.stephanix.com](http://www.stephanix.com)

STEPHANIX - 10 rue Jean Moulin - Z.I du Bayon - 42 150 La Ricamarie - FRANCE  
Tel : + 33 (0)4 77 47 81 60 - Fax : +33 (0)4 77 37 55 19 - [export@stephanix.com](mailto:export@stephanix.com)