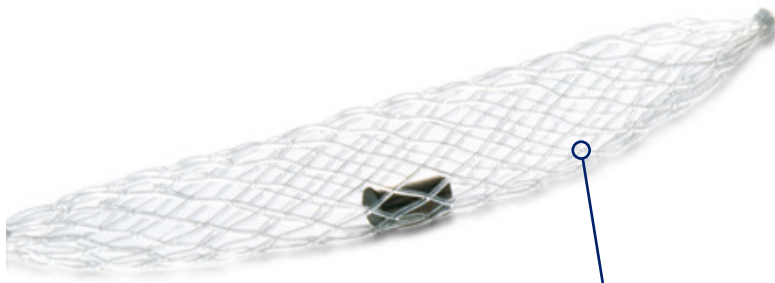


SecurMark® Biopsy Site Markers

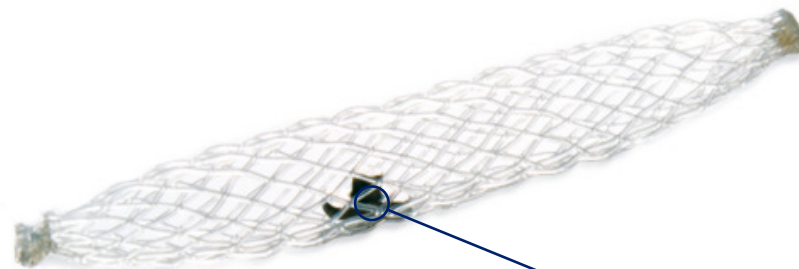
Enhanced ultrasound visibility with multiple shapes

SecurMark site markers are comprised of two components: the permanent marker is made of bio-compatible titanium, while the outer material consists of bio-absorbable suture-like netting that is designed to minimize movement within the biopsy cavity and enhance ultrasound visualization¹. SecurMark site markers are available in two distinct shapes to allow for multi-site identification.

SecurMark Biopsy Site Markers



Bio-absorbable suture-like netting



Bio-compatible titanium

SecurMark for ATEC®

- Features side deployment delivery system with a flexible cannula.
- For use with ATEC handpieces in stereotactic or ultrasound procedures.

SecurMark for Celero®

- Designed to be inserted percutaneously or through the Celero Introducer during ultrasound procedures.

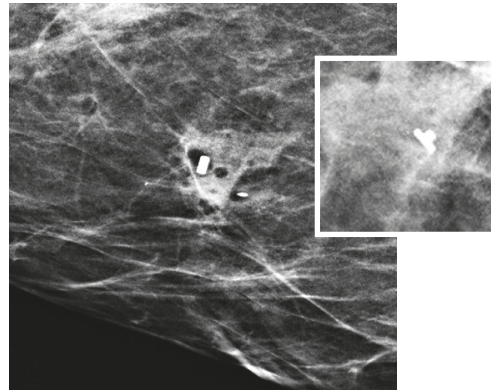
SecurMark for Eviva® and Brevera®

- Utilizes a rigid end-deploy delivery system that requires no pull-back for deployment.
- Part of the Eviva integrated stereotactic solution to ensure easy and accurate delivery.

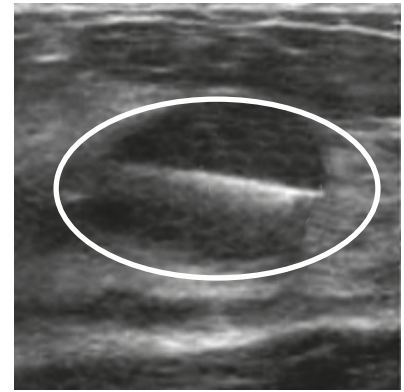
**SecurMark Titanium
Mini Cork shape**



**SecurMark Titanium
Top Hat shape**



SecurMark Mammography



SecurMark for Celero in Ultrasound



SecurMark Titanium Options

The SecurMark titanium options feature permanent markers made of bio-compatible titanium with the outer layer comprised of bio-absorbable suture-like netting. The titanium markers are available in two distinct shapes for multi-site marking.




For Ultrasound use with ATEC® Breast Biopsy Device

| Part Number | Marker Description | Shape | Length | Gauge | ATEC Biopsy Devices |
|---------------------|---|---|--------|-------|------------------------------|
| SMARK-ATEC-13-09 | SecurMark for ATEC 13 cm, Mini Cork shape |  | 130 mm | 9G | ATEC 0909-20 ATEC 0912-20 |
| SMARK-ATEC-2S-13-09 | SecurMark for ATEC 13 cm, Top Hat shape |  | 130 mm | 9G | |

For Ultrasound use in percutaneous applications

| Part Number | Marker Description | Shape | Length | Gauge | |
|-----------------|---|---|--------|-------|--|
| SMARK-CELERO | SecurMark 10 cm, End Deploy (Introducer or Free Hand) Mini Cork shape |  | 100 mm | 15G | Celero® Biopsy Devices are no longer sold in EMEA. |
| SMARK-CELERO-2S | SecurMark 10 cm, End Deploy (Introducer or Free Hand) Top Hat shape |  | 100 mm | 15G | |



For Stereotactic application with ATEC® Breast Biopsy Device

| Part Number | Marker Description | Shape | Length | Gauge | ATEC Biopsy Devices |
|---------------------|--|---|--------|-------|--|
| SMARK-ATEC-2S-36-09 | SecurMark for ATEC biopsy site marker for Stereotactic-guided breast biopsy. Top Hat shape |  | 360 mm | 9G | ATEC 0909-20 ATEC 0909-12 ATEC 0912-20 ATEC 0912-12 ATEC 0914-20 |
| SMARK-ATEC-36-09 | SecurMark for ATEC biopsy site marker for Stereotactic-guided breast biopsy. Mini Cork shape |  | 360 mm | 9G | |
| SMARK-ATEC-36-12 | SecurMark for ATEC biopsy site marker for Stereotactic-guided breast biopsy. Mini Cork shape |  | 360 mm | 12G | ATEC 1209-20 ATEC 1212-20 |

For Stereotactic application with Eviva® Breast Biopsy Device

| Part Number | Marker Description | Shape | Length | Gauge | Eviva Biopsy Devices |
|-------------------|--|---|--------|---------|--|
| SMARK-EVIVA-13 | SecurMark for Eviva & Brevera 13 cm, Mini Cork shape |  | 130 mm | 9G, 12G | EVIVA_0913-20 EVIVA_0913-12T EVIVA_1213-20 |
| SMARK-EVIVA-2S-13 | SecurMark for Eviva & Brevera 13 cm, Top Hat shape |  | 130 mm | 9G, 12G | |
| SMARK-EVIVA-10 | SecurMark for Eviva 10 cm, Mini Cork shape |  | 100 mm | 9G, 12G | EVIVA_0910-12T EVIVA_0910-20 |
| SMARK-EVIVA-2S-10 | SecurMark for Eviva 10 cm, Top Hat shape |  | 100 mm | 9G, 12G | |

For Stereotactic application with Brevera® Breast Biopsy Device

| Part Number | Marker Description | Shape | Length | Gauge | Breveria Biopsy Devices |
|-------------------|--|---|--------|---------|-------------------------|
| SMARK-EVIVA-13 | SecurMark for Eviva & Brevera 13 cm, Mini Cork shape |  | 130 mm | 9G, 12G | BREVDISPO9 |
| SMARK-EVIVA-2S-13 | SecurMark for Eviva & Brevera 13 cm, Top Hat shape |  | 130 mm | 9G, 12G | |



EC REP Hologic BV, Da Vincilaan 5, 1930 Zaventem, Belgium

References:

1. Pickney and Shah, 2013, Prospective comparative study to evaluate the sonographic visibility of five commercially available breast biopsy markers. (GelMark, HydroMARK, SecurMark, SENOMARK, and UltraClip by Bard (BioDur® 108 core)). Yen et al. verified that SecurMark and SENOMARK devices show reduced displacement when compared to traditional metal surgical clips (28% and 27% vs 38% displacement, p = 0.001 and p = 0.0001). Visibility is dependent on surrounding tissue, experience may vary.

Breast & Skeletal Solutions | www.hologic.com | euinfo@hologic.com | +32.2.711.4680