

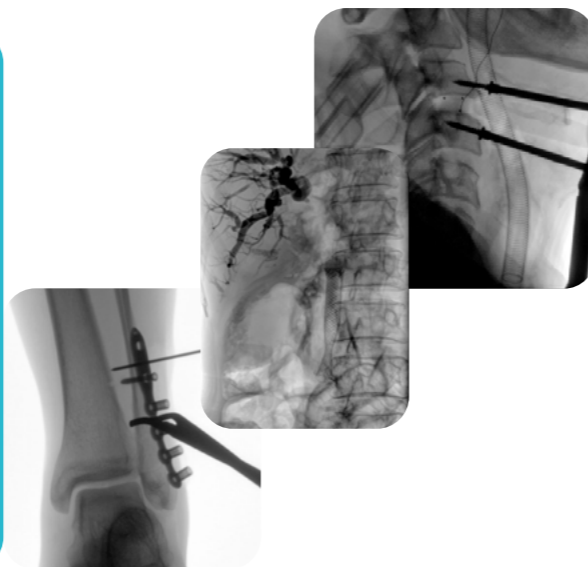
OMNISCOP DREAM-S



STEPHANIX
MEDICAL IMAGING SOLUTIONS



Omniscop DReam-S: All-In-One unique surgical c-arm that fits in tight spaces or small operating rooms. Its flat panel detector offers optimal image quality at low dose and user has the choice of 2 FPD size. Suitable for all surgical procedures such as orthopedic, spine, urology, digestive as well as endoscopy, general radiology and much more.



EASY TO USE AND OPERATE

The ergonomics of the C-arm offers an adapted, effortless and precise positioning around the patient. The compact 2-in-1 solution makes it easy to move in and between operating rooms. Each color-coded release lever is dedicated to one movement.

▶ 360° DISPLAY

View images with a maximum comfort. Monitor height and tilt are adjustable enhancing user experience. Image is always in surgeon's line of sight.



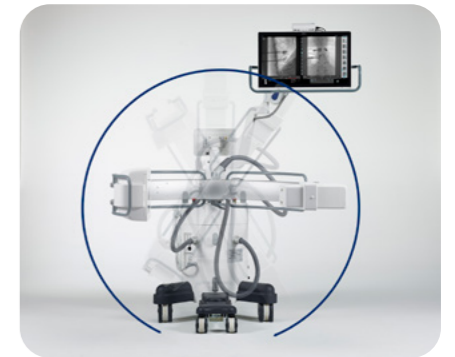
▶ ORBITAL ROTATION

Wide orbital rotation range (from +65 ° to -95°) speeds up angular and lateral projections without having to move the c-arm around the operating table.



▶ ANGULAR ROTATION

Precise movements and wide angles of more than +/- 210° around and in front of the patient.



▶ VARIABLE AND MOTORIZED HEIGHT

Vertical movement range of 450 mm turns this C-arm into a very versatile unit.



OMNISCOP DREAM-S

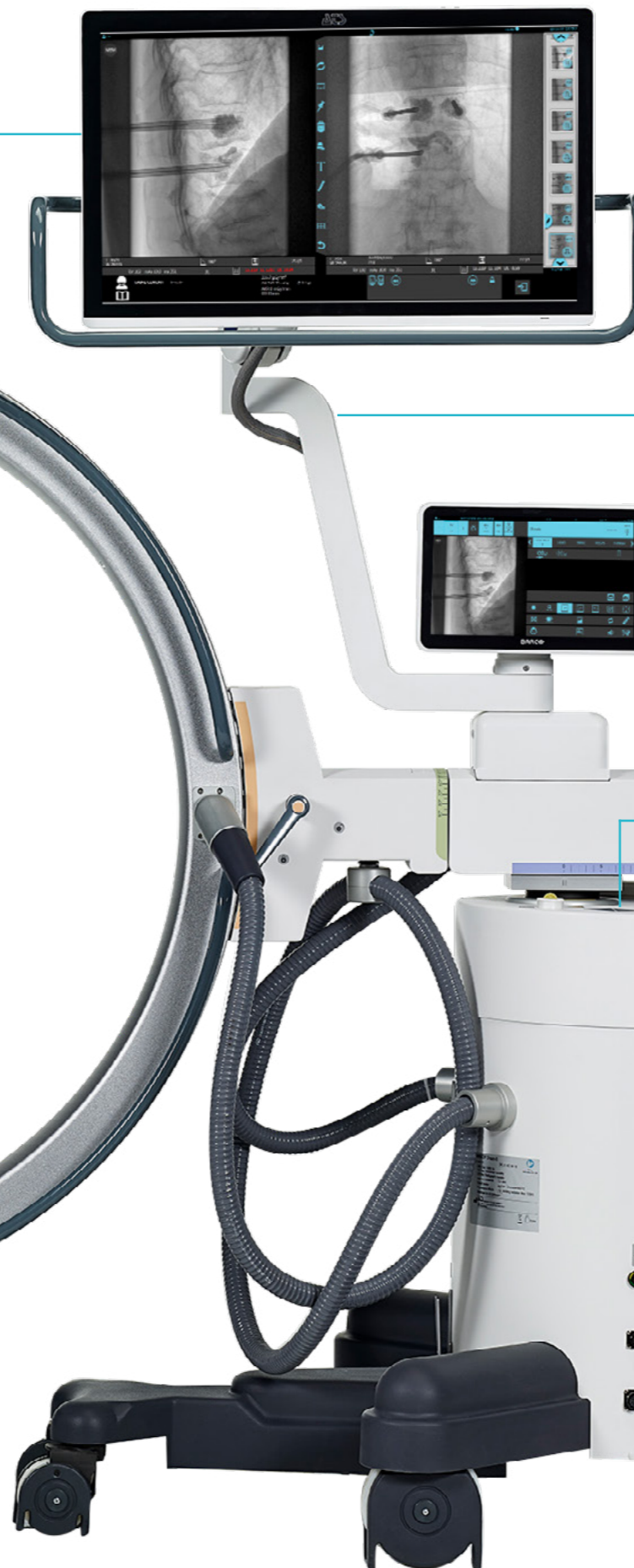
MEDICAL GRADE HD 27", TOUCH SCREEN - 4MP RESOLUTION, allows live display and post-processing of images. The LIH (Last Image Hold) function allows you to freeze and store the last image of a series without user action.

REMOVABLE GRID for low dose pediatric surgery and gridless procedures.

FLAT PANEL DETECTOR 21x21 OR 30x30 CM higher definition with full resolution display 1:1.

C-ARM mobile and light, with an opening of the 108 cm (42,5 in) for a better and faster accessibility and positioning.

POWERFUL 5KW GENERATOR X-ray emission in pulsed mode with modulated power to suit every procedure type. Excellent dose/image quality ratio.



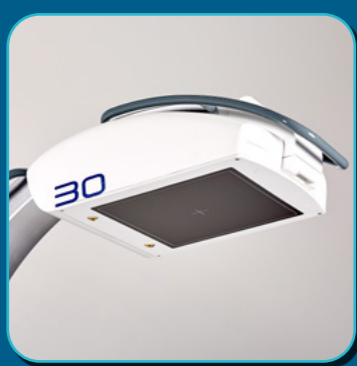
UNPARALLEL ADJUSTMENT AND FLEXIBLY Thanks to its 3-axis adjustment, monitor is always right at surgeon's line of sight.

OPERATOR 12" TOUCH SCREEN The operator's touch screen provides an easy access to exams protocols and image tools. Benefits from an unobstructed view of the live images, while having the controls always within reach.

ADJUSTABLE HEIGHT motorized vertical travel up to 45 cm.

STEERING HANDLES dual handle for easier movement and travel

EXTENDED CONNECTIVITY : USB, ETHERNET, WIFI, HDMI WIFI, RADIATION DOSE SR. (DICOM OPTIONS)



AMORPHOUS SILICIUM FLAT PANEL DETECTOR

Choose between 21x21 cm or 30x30 cm FOV to fit your surgical needs.



DOSE REDUCTION

50% dose reduction exam accessible with single click. Removable grid and digital zoom.



LASER LOCALIZERS

Located at tube and detector side, for a faster and more precise alignment.



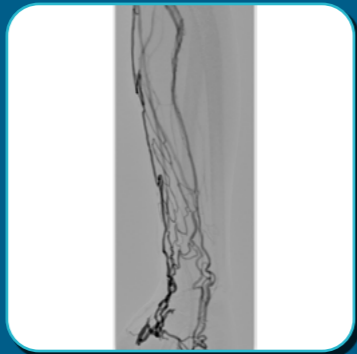
WIRELESS FOOTSWITCH (OPTION)

To be used instead of the standard wired footswitch.



ADVANCED POSTPROCESSING

Dedicated to each anatomical protocol to guarantee image quality reproducibility.



DSA AND DEDICATED MEASUREMENT TOOLS (OPTIONS)

To meet the needs of vascular exams.



PRINTER (OPTION)

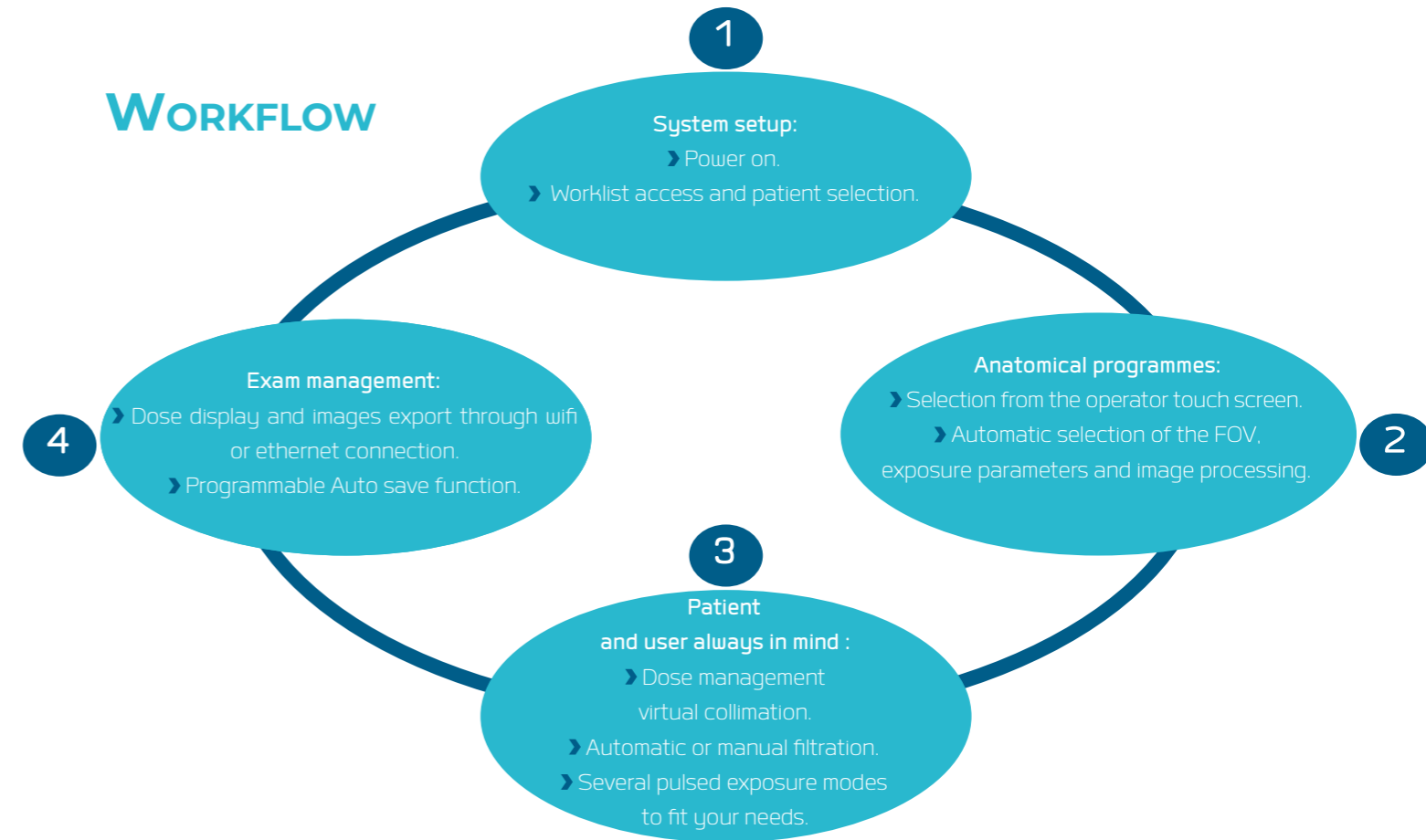
To have a hard copy in patient file of the dose report and key images. Images export can be performed via USB.



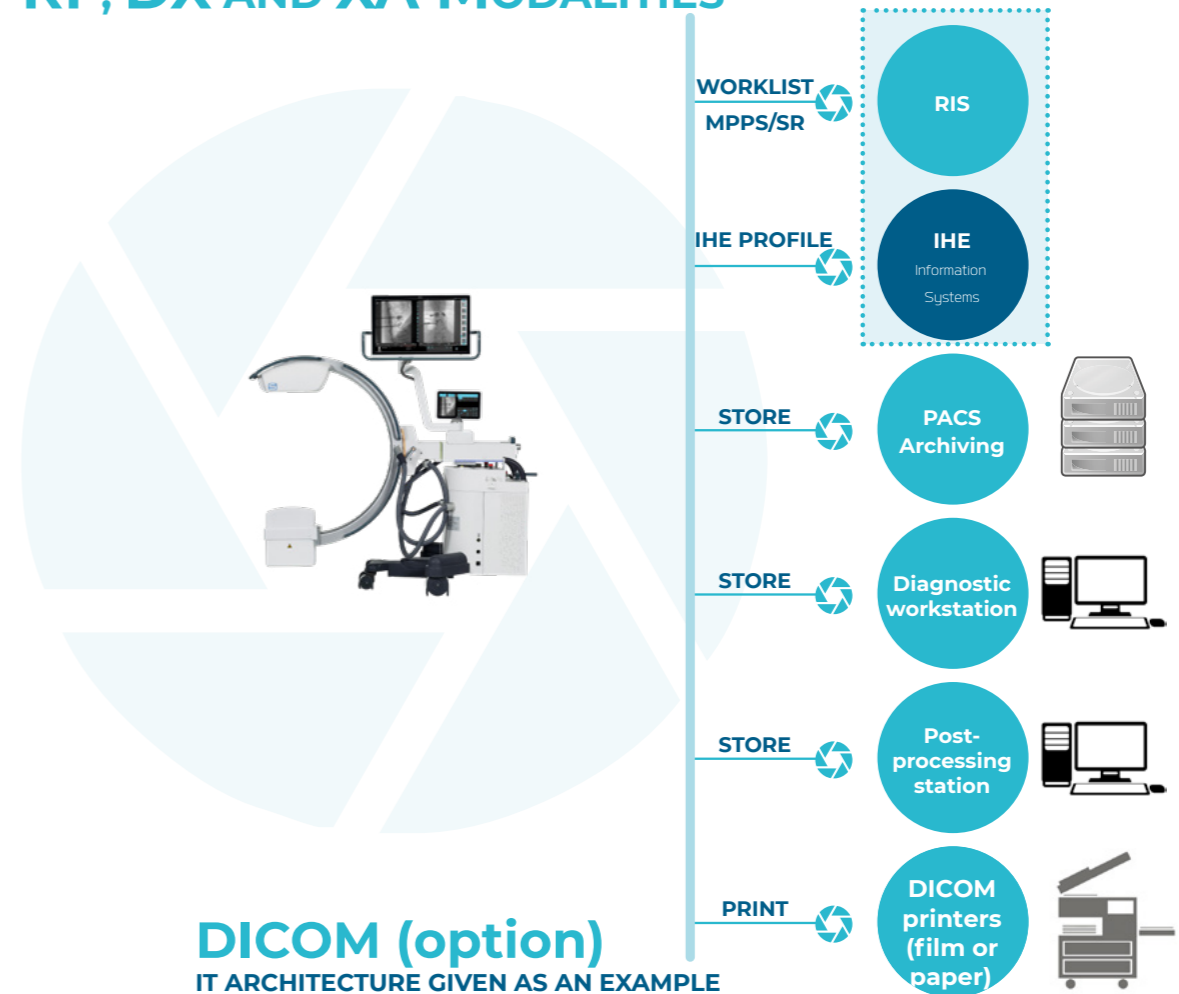
STAND ALONE ADDITIONAL MONITOR (OPTION)

Display in real time images shown on main screen.

WORKFLOW



RF, DX AND XA MODALITIES



LATEST GENERATION OF DIGITAL RADIOGRAPHY SOLUTIONS: INTEGRATED, DYNAMIC, PORTABLE, WIRED AND WIRELESS DETECTORS.

REMOTE CONTROLLED TABLES



X-RAY ROOMS



X-RAY MOBILE UNITS



SURGICAL C-ARMS



STEPHANIX se réserve le droit de modifier les caractéristiques de ses produits en fonction de l'évolution perpétuelle des technologies. Photographies non contractuelles.
Stephanix allows the right of modifying the products' features regarding the evolution of the technologies without notice. Non-binding document. Omniscope D'exam-S - 2024/12.



STEPHANIX
MEDICAL IMAGING SOLUTIONS

Head office : 10, rue Jean Moulin
Z.I. du Bayon - 42150 La Ricamarie - FRANCE
Tel. +33 4 77 47 81 60 - Fax: +33 4 77 37 55 19
export@stephanix.com

www.stephanix.com