

STEPHANIX

MEDICAL IMAGING SOLUTIONS

— CATALOG —



STEPHANIX

A team of 200 staff members at your service.



STEPHANIX is a renowned French industrial SME, specialized for 40 years in the medical imaging field.

As a French manufacturer of radiology remote controlled tables, we cover all the needs of radiology units in hospitals, clinics and private practices.

We offer a complete range of digital x-ray solutions: remote-controlled rooms, rad rooms, mobile X-ray units, surgical c-arms, and much more.

For more than 10 years, all of our x-ray remote controlled tables have been certified as [Origine France Garantie](#). This certification, subject to an annual audit and much more demanding than the simple "Made in France" customs marking, guarantees that our x-ray tables take on all their essential characteristics in France.

We are the first and only company in our sector to have obtained this universal certification.

[Europe](#) is also represented in our product range, with our rad rooms, generators, mobile X-ray units, surgical c-arms, all manufactured in the EU.

Thanks to our know-how, we have conquered the French radiology market and continue our development and presence worldwide.

Our systems are CE marked and registered with the FDA, Health Canada, TGA and SFDA.

Thanks to these certifications, our products are available worldwide, 30% of our sales are international.

In the early 2000s, we initiated major partnerships with key manufacturers such as [Canon Medical Systems](#) and [Thales](#), with digital flat panel detector solutions that can equip our complete product range.

More than 20 years later, these same partnerships are ongoing - a guarantee of expertise, service continuity, and more simply, stability.

STEPHANIX is also contributing to the promotion of French medical imaging internationally through the [French Healthcare Association](#) to which we belong. The aim of the brand is to communicate and promote French expertise and excellence in healthcare abroad.

STEPHANIX: men and women who work together to imagine and develop the medical imaging solutions for tomorrow.



SALES

Our sales force: we are here to support you.
Medical Imaging professionals with a global vision, at your service, to offer you solutions and support in your projects.



TRAINING

Our clinical application department helps you from getting started to the expertise of your system and offers you additional training according to your needs. Throughout the year our technical staff organizes training sessions for our distributors' engineers. They're autonomous and efficient for installations and service of our equipment's all over the world.



SERVICE

International support with staff trained on the latest technologies.
Expert technicians which goal is to minimize downtimes of your system.

— RADIOLOGICAL SOLUTIONS —



From the remote-controlled table to rad-room or mobile x-ray unit, STEPHANIX demonstrates its know-how and innovates through the application of new technology and ideas: the integration of flat panel detectors into our range is a real example and a proven success.

Innovation is our driving force: STEPHANIX was the first company to introduce a remote-controlled table with a flat panel detector*.

Mastery of research and development, manufacturing procedures and its commitment to quality service allow all practitioners to benefit from technology and performance, tailored to their requirements.

STEPHANIX offers a wide range of digital detectors (DR) to meet all of your general radiology needs. In addition to the integrated full-field detectors, wireless detectors bring DR solutions wherever they are needed, such as trauma and bedside applications.

The large portfolio of flat panel detectors enables wide-ranging solutions to meet wide-ranging department expectations: configurations with a single integrated or removable detector, configurations with two, three or four detectors, with the possibility of combining all models.

* installation of the first STEPHANIX remote-controlled room with a flat panel detector integrated, in September 2001.

D²RS 90/90



The result of 40 years' experience. D²RS 90/90 keeps the famous qualities of D²RS such as the capacitive control console, complete and customizable autopositioning, the maximum unrestricted load of 230 kg, the column incidence combined with the tabletop movements which provide 2.25m coverage under X-ray, and the rear patient access.

With these features, D²RS 90/90 optimizes its accessibility with a tilting of +/- 90° as well as an outstanding variable height travel, from 38 cm (15") to 148 cm (58") for unequalled access.

D²RS 90/90, the new reference for your requirements.



D²RS

The whole STEPHANIX expertise. Each anatomical protocol controls the automation of table positioning, collimation, filters, acquisition parameters and post-processing.

The lateral and longitudinal movements combined with the angulation of the column (+/- 40 °) allow complete coverage of the tabletop under X-rays, as well as smart rear access.

For positioning difficult patients, D²RS has no limitation of movement up to 230 kg and can support up to 310 kg in a horizontal position.

STEPHANIX has also redesigned its control console. A new design, new materials, new technologies, to offer more up-to-date products.



BV Cert. 6182197



Xtreme Premium



An emergency X-ray room : fully digital, fully automatic, fully motorized.

With autopositioning, the Xtreme Premium multipurpose x-ray room is equipped with a ceiling suspension, an elevating floating tabletop and a tilting wall Bucky. It is digital with Flat Panel Detector technology.

Each customizable anatomical protocol drives the automation of units positionings, collimation, filters, acquisition & post-processing parameters.

Fluidity, ease of movement and technicality sum up this new x-ray system that focuses on your patients needs.



Xtreme

Xtreme, a tailor-made customization. The configurations are customizable according to your expectations: general radiology, traumatology, emergency room, paediatrics, specific applications.

Xtreme, analog or digital, is composed of a ceiling suspension, a vertical or tilting Bucky, and a fixed or mobile elevating table. It exists in manual, or auto-tracking versions.

The combination of fixed & portable image detectors in the same room increases the possibilities of procedures to make routine clinical exams.



CE 1639



Statif Pro

This equipment consists in a vertical column, on which slides vertically a rotating C-arm fitted with one Bucky and one X-ray tube.

Exams may be performed on patient in standing position, sitting in a wheelchair or lying on a mobile table. This C-arm design allows profile exposures.

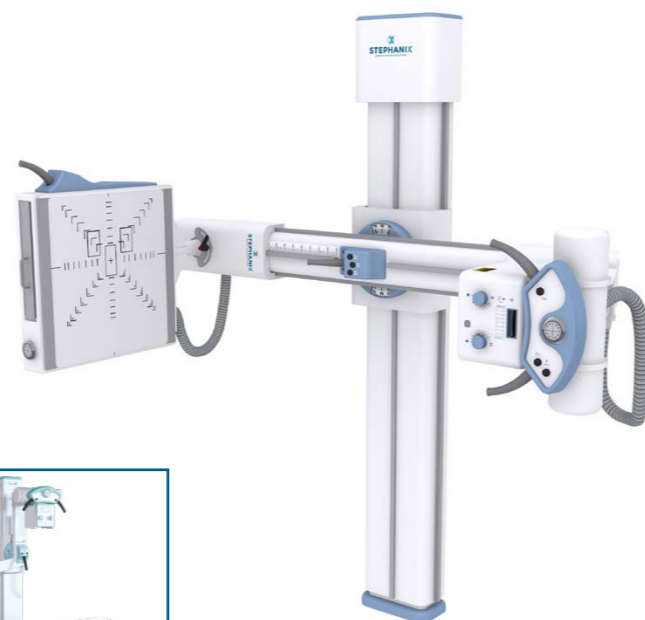
The Autopositioning version makes it a remote controlled and automated RAD room. With the touchscreen, the operator can view an explanatory diagram of the patient's position for the selected exam as well as the pre-set parameters for the device and the generator.



Statif

This unit allows x-rays to be taken in horizontal, vertical or oblique position; it is often dedicated to chest and extremity protocols.

A version with fixed SID, BRS type (specifications defined by WHO) is available in the STEPHANIX range of products.

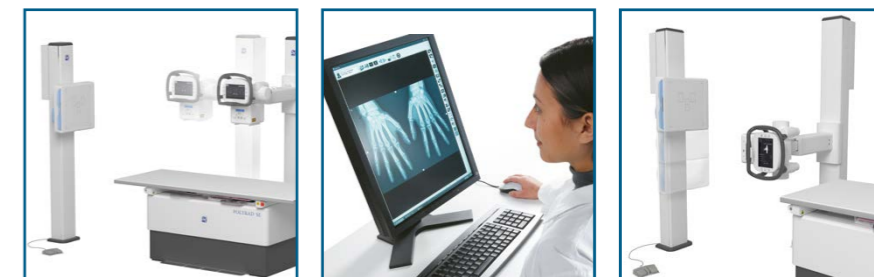


Rad Series



With a floor tubestand column, RAD Series offers you the same applications as the RAD room with ceiling suspension:

- combinations of stands,
- possibilities of osteoarticular and chest imaging,
- conventional or DR versions.



Nomad DReam

Nomad digital solution:

To digitalize your analog x-ray rooms and mobile units, without modification nor generator connection, the portable acquisition console is linked to a wifi Flat Panel Detector (FPD) with the Automatic Exposure Detection mode.

The touch screen user interface allows working by anatomical regions with dedicated post-processings that can be adjusted before sending to network.



MOVIX DReamy



Have access the next generation of STEPHANIX mobile units: innovation concentrated in a more compact motorized mobile unit, keeping the best of its predecessors, and offering greater flexibility and ergonomics.

Its technology has been designed for and with healthcare professionals to provide reliability, power, high definition image, user-friendly interface and workflow, patient coverage, greater visibility when traveling.

These systems are designed for patient bedside radiography, but also for imaging in intensive care, emergency, and paediatric radiology units.



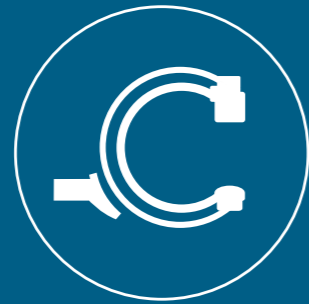
MOVIX 4/8 E+

Weighing less than 100 kg, compact (72x67x141 cm folded), this mobile unit with a monoblock generator is used in hospitals for patient bedside exposures, or in the field for ambulatory exams, for example during humanitarian or sporting events.

The Flat Panel Detectors of the DR mobile versions can be shared in all STEPHANIX digital rooms.



— C-ARMS —



Because imaging in the operating room is challenging and requires compact products that are quick and easy to use, STEPHANIX offers a range of surgical C-arms.

As a radiology imaging specialist, we offer several configurations of flat panel detectors.

Omniscop DReam-S

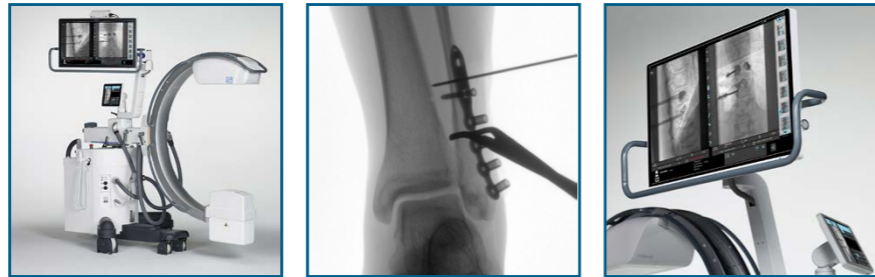


This "all-in-one" mobile fluoroscopy C-arm with flat panel detector has a very small footprint.

Omniscop DReam-S: a C-arm, a tube, a generator, an operator console and a touchscreen workstation.

This optimized system on a single unit will be adapted for your extremity surgeries but also for more challenging procedures thanks to its 5 kW generator power. The C-arm depth of 108 cm ensures maximum accessibility. Its touchscreen interface is ergonomic and adapted to the needs of operating room users. A dedicated storage area is provided to install a printer on the workstation (option).

21 x 21 cm or 30 x 30 cm detector, with optional wifi trolley equipped with a second diagnostic monitor.



Omniscop DReam

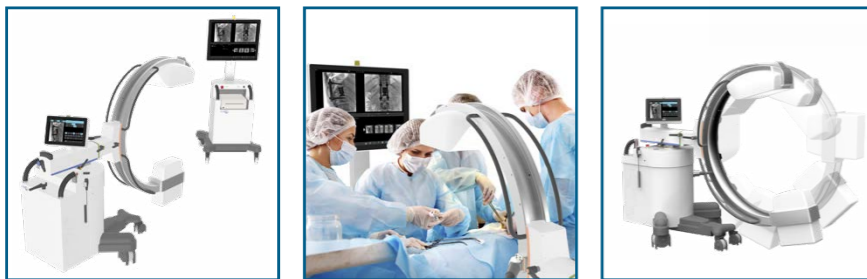
This mobile fluoroscopy C-arm with flat detector is composed of a C-arm and a dedicated workstation on trolley. The C-Arm is equipped with the latest generation flat panel detector, available in 21 x 21 cm or 30 x 30cm.

Omniscop DReam will assist you in a wide range of surgical procedures, thanks to the different generator powers of 5, 20 or 25 kW.

Optional vascular tools are available. Its removable grid (manual) will meet your paediatric needs.

A space is dedicated for the installation of a A4/A6 printer on the workstation (option).

New IGZO flat panel detector for more detailed imaging.



Omniscop DReam-S Efficiency

Ideal for orthopedic surgery.

Omniscop DReam-S Efficiency is a compact surgical C-arm with a 21 x 21 cm flat panel detector, offering low-dose image quality.

Easy access to extremities and articulations thanks to a C-arm depth of 108 cm, allowing you to work without restriction, even on lower and upper limbs.

4 kW generator power, guaranteeing clear images for accurate procedures such as infiltrations, osteosynthesis, or interventions on small bones and joints.

Compact and easy to handle, it easily integrates into the operating room and offers flexibility and safety for surgeons.

The C-arm can be equipped with a trolley with wired monitor (optional).





www.stephanix.com

STEPHANIX - 10 rue Jean Moulin - Z.I du Bayon - 42 150 La Ricamarie - FRANCE
Tel : + 33 (0)4 77 47 81 60 - export@stephanix.com - www.stephanix.com